



MEDIA LICENCE APPLICATIONS AND GUIDANCE

WWW.NATIONAL-AUTOGRASS.COM

CONTENTS

Page 2 - Introduction - Key Points of a media licence- Costs

Page 3 -How to apply and What you need before applying

Page 4 -Using track maps for authorised positions and guidance

Pages 5 - 26 Club media maps

page 5	CWMDU	page 16	GRADFORD
page 6	CAMBRIDGE	page 17	SCUNTHORPE
page 7	CORK	page 18	SOUTH WALES
page 8	CENTRAL SCOTLAND	page 19	SPALDING
page 9	CARLOW	page 20	STAR
page 10	INVICTA KENT	page 21	SOUTHERN
page 11	MALLOW	page 22	STURTON
page 12	MELTON	page 23	SCARBOROUGH
page 13	NOTTINGHAM	page 24	WEST WATERFORD
page 14	NORTH SHROPSHIRE	page 25	YORK
page 15	PENHOW	page 26	YORKSHIRE DALES



INTRODUCTION

Please take the time to read all the information thoroughly. Always seek advice should you require further information.

KEY POINTS TO A NASA MEDIA LICENCE

Included in your National Autograss media licence is a DBS check, a physical Media pass and a NASA Media high visibility vest with your media number on it. **You agree** that whilst you are present at an event held by National Autograss, you will wear the full accepted PPE and the NASA high visibility with the number that correspond with your yearly media pass number. You must agree to attend quarterly zoom meetings with the NASA safety team when you hold a Media Licence.

COST

The current annual cost is £1 00 for a media licence. This is to be paid to NASA directy.



HOW TO APPLY

You can apply and read the full terms and conditions by visiting
<https://www.national-autograss.com/medialicence>

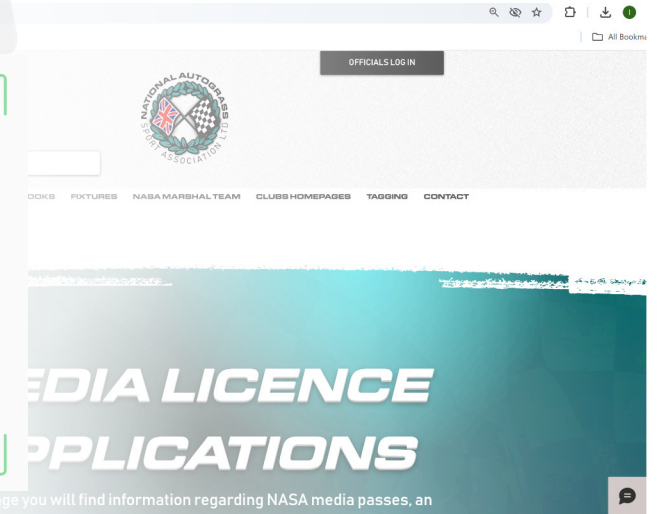
WHAT YOU NEED BEFORE APPLYING

Prior to applying you will need the following information to submit your application:

PLI Certificate (Cover needs to be to a value of a minimum of 5 million). This needs to be uploaded as an attachment

Current and previous address history

Personal details and documentation reference numbers (i.e National Insurance number/Driving Licence/Passport)



USING TRACK MAPS FOR AUTHORISED MEDIA POSITIONS

Each club has unique access limitations and safety considerations.

We have attached maps for each track. These are to be used to identify the only approved locations for media activity at the named specific track.

Please familiarise yourself with these positions before the event and plan your coverage accordingly. Always follow marshal instructions and be prepared to relocate or cease activity if requested.

All authorised positions have been assessed for safety and operational suitability. Media personnel are reminded that motorsport environments are inherently unpredictable, and personal safety remains the responsibility of the individual at all times.

Access to any area not shown on the map is strictly prohibited unless prior approval has been granted by NASA.



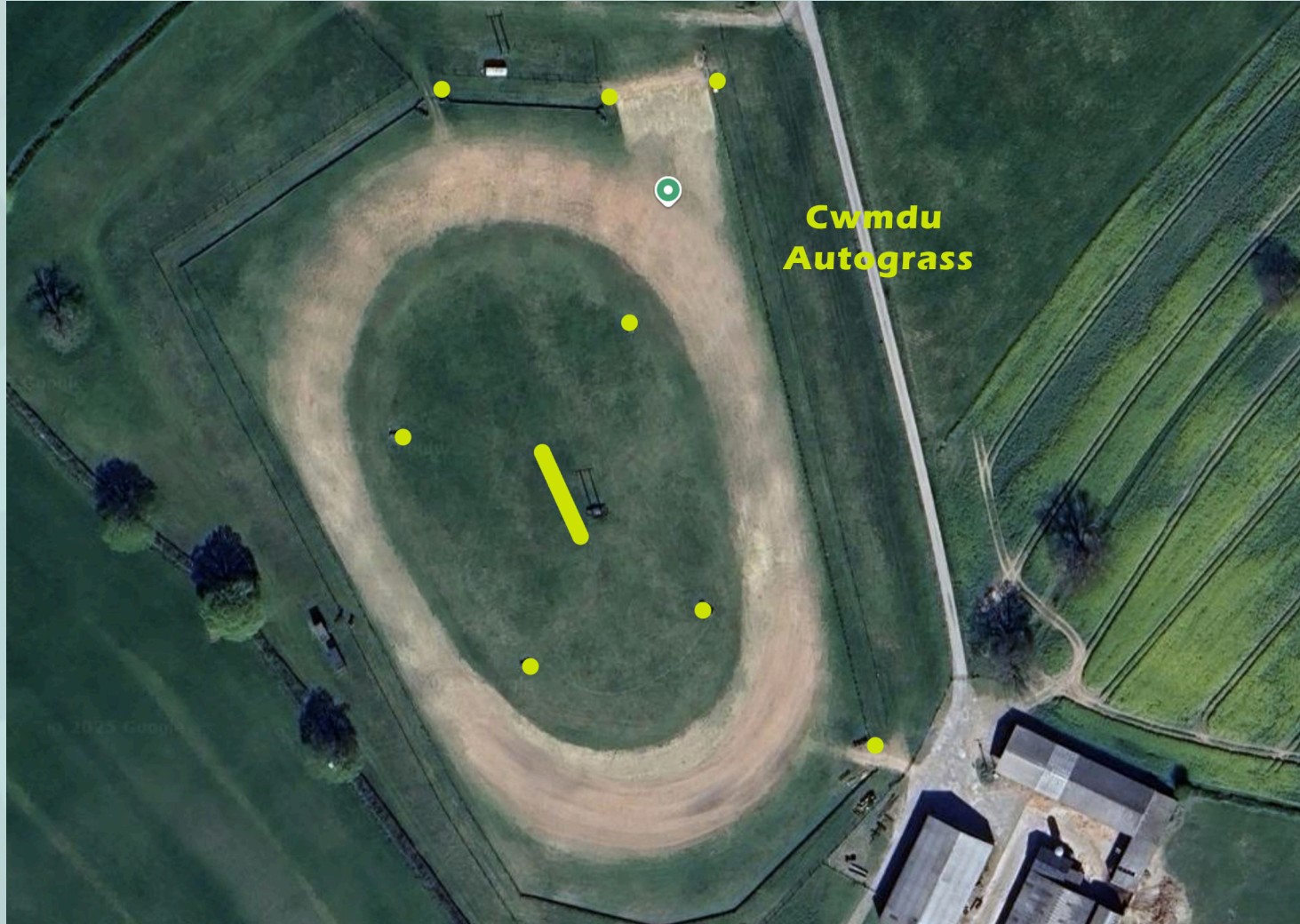
MAP KEY



APPROVED
LOCATIONS



PERMISSION
REQUIRED
FROM OFFICIALS
ON THE DAY OF
THE EVENT



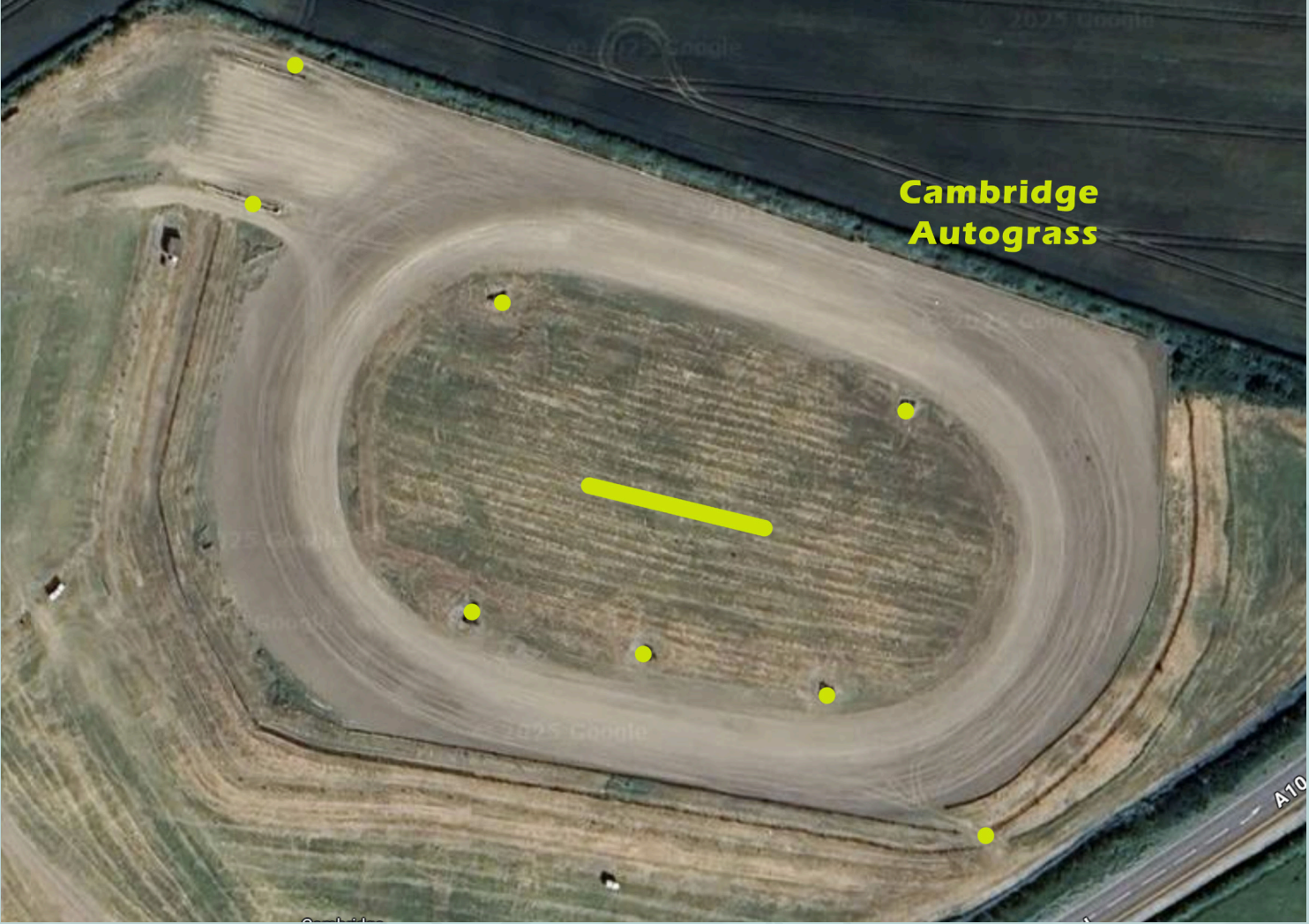
MAP KEY



APPROVED
LOCATIONS



PERMISSION
REQUIRED
FROM OFFICIALS
ON THE DAY OF
THE EVENT



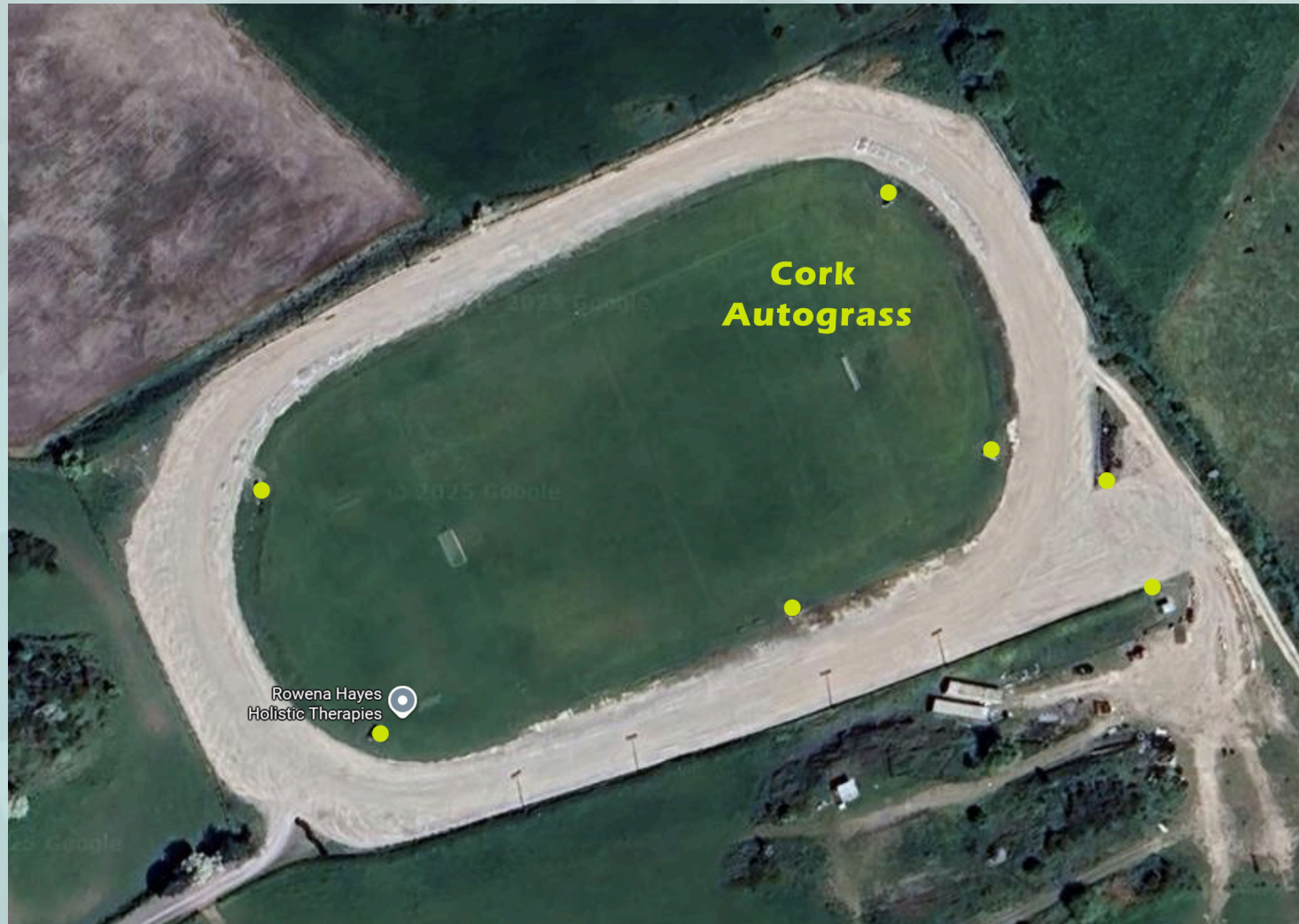
MAP KEY



APPROVED
LOCATIONS



PERMISSION
REQUIRED
FROM OFFICIALS
ON THE DAY OF
THE EVENT



MAP KEY



APPROVED
LOCATIONS



PERMISSION
REQUIRED
FROM OFFICIALS
ON THE DAY OF
THE EVENT



MAP KEY



APPROVED
LOCATIONS



PERMISSION
REQUIRED
FROM OFFICIALS
ON THE DAY OF
THE EVENT



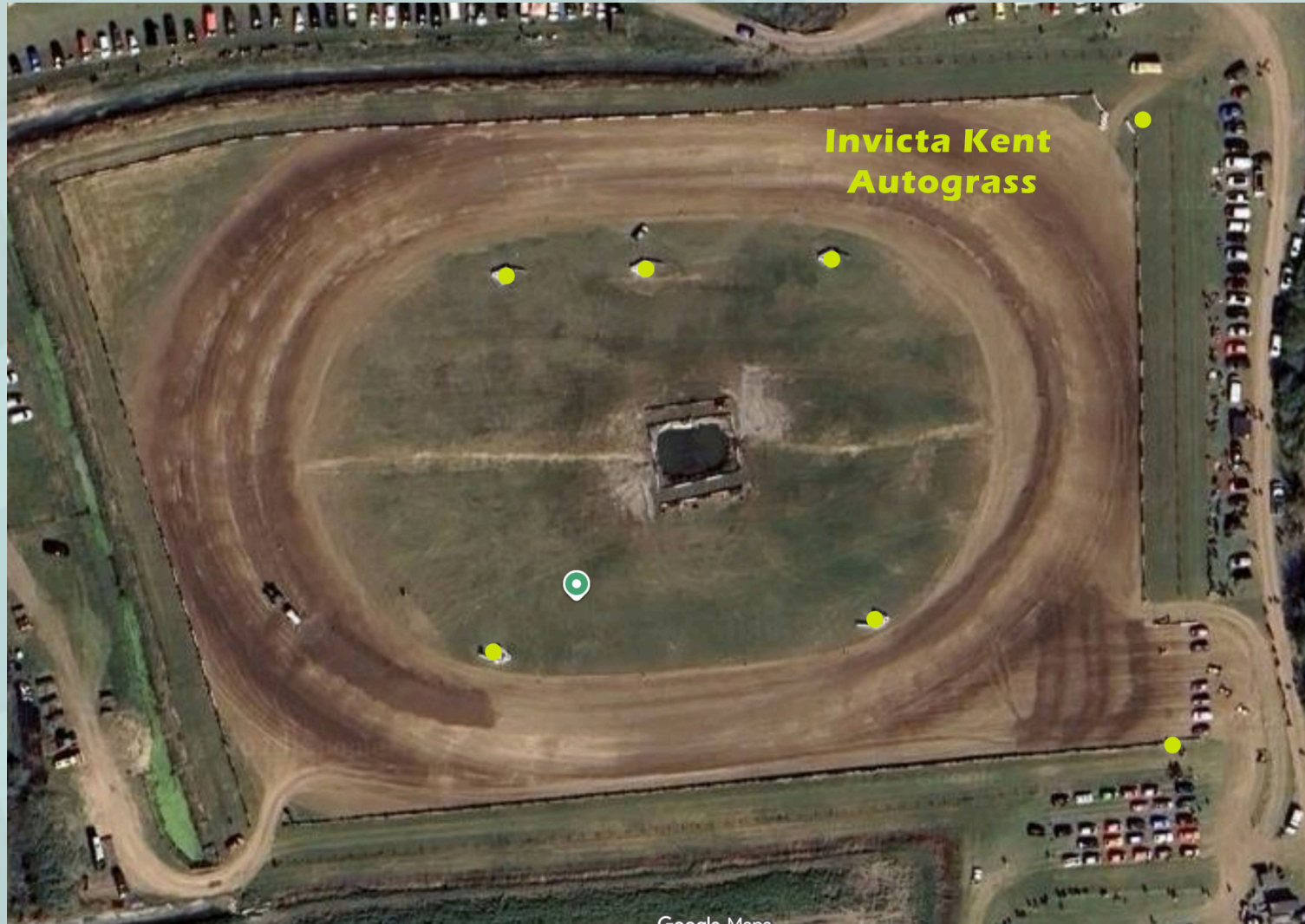
MAP KEY



APPROVED
LOCATIONS



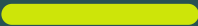
PERMISSION
REQUIRED
FROM OFFICIALS
ON THE DAY OF
THE EVENT



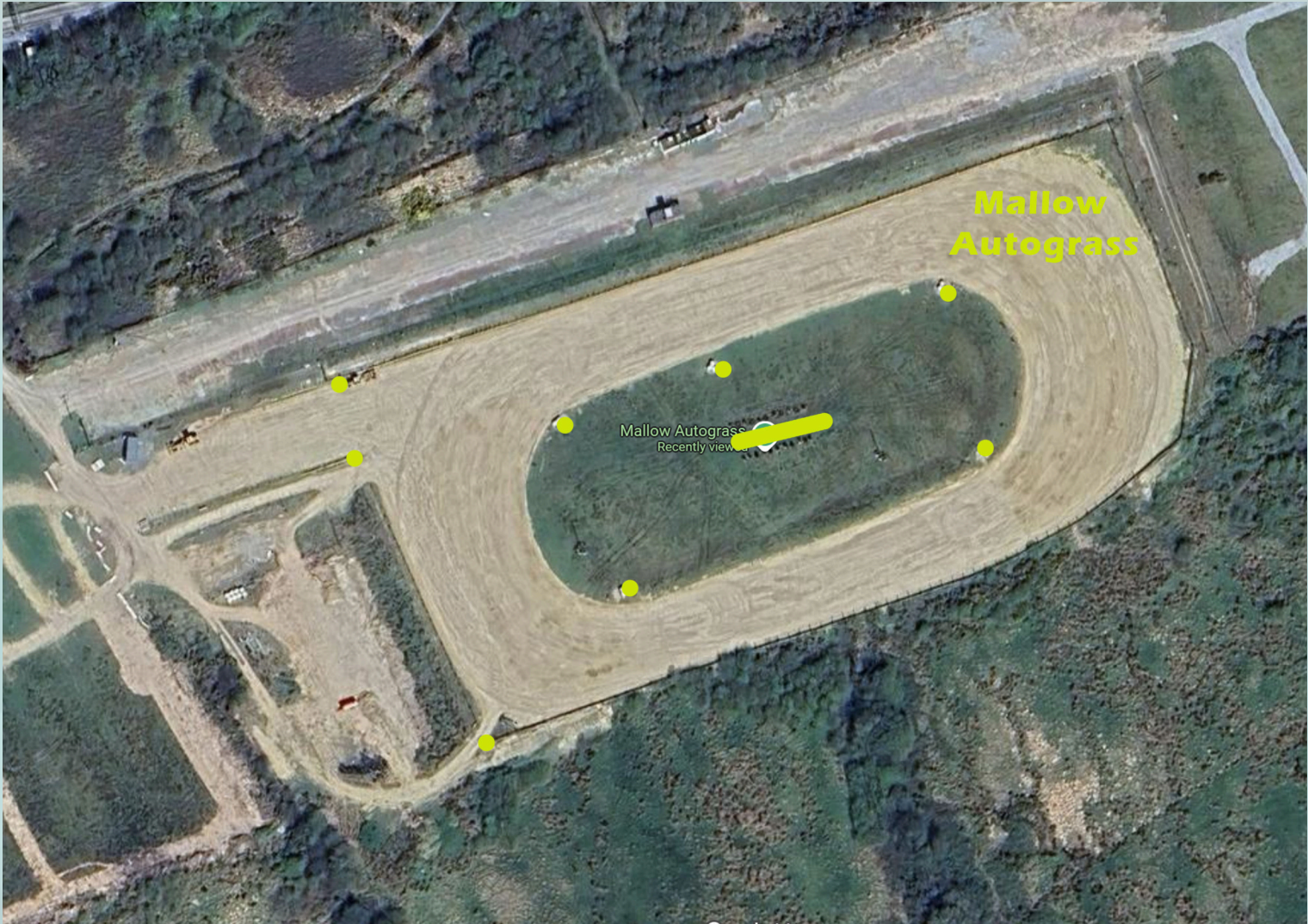
MAP KEY



APPROVED
LOCATIONS



PERMISSION
REQUIRED
FROM OFFICIALS
ON THE DAY OF
THE EVENT



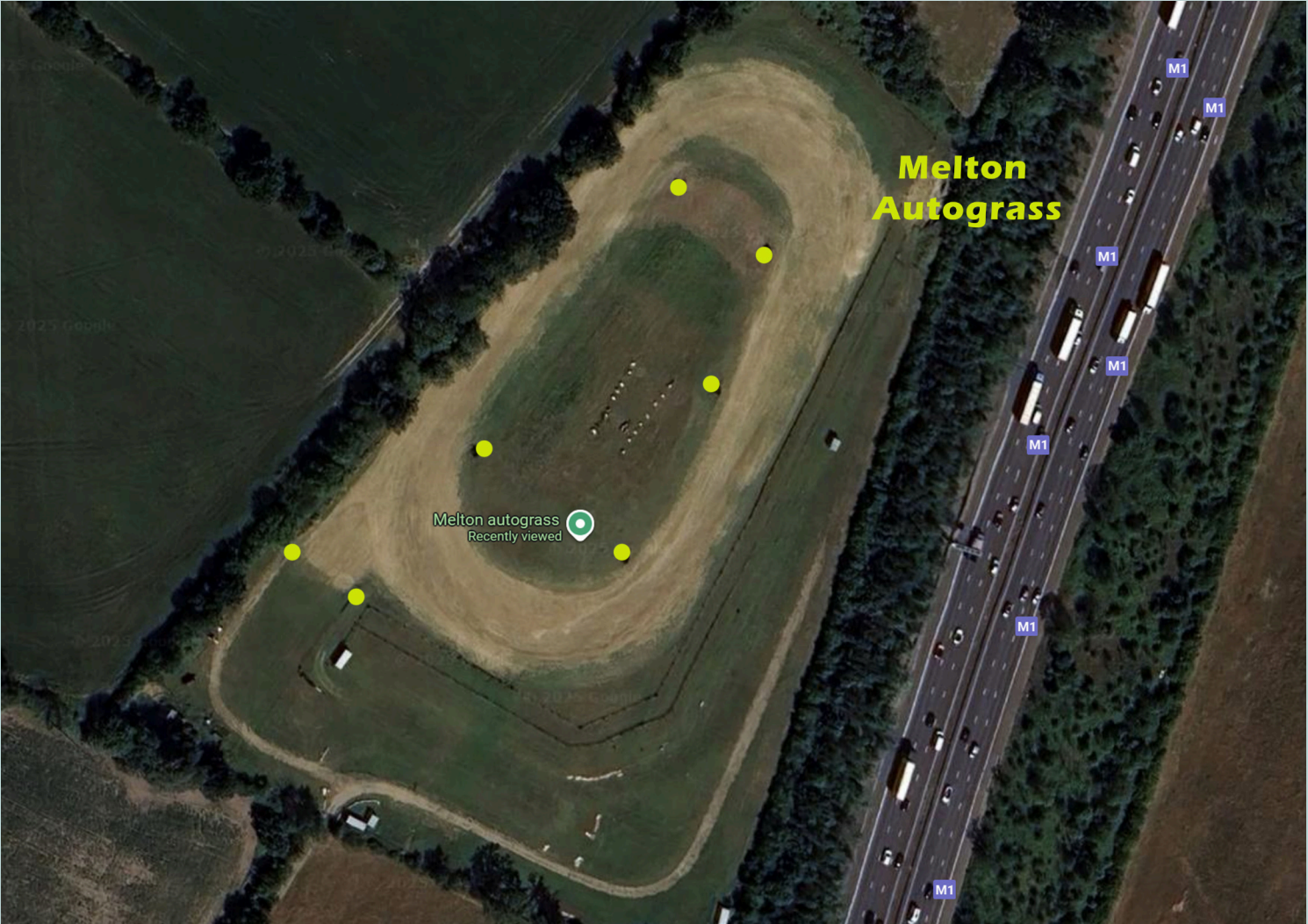
MAP KEY



APPROVED
LOCATIONS



PERMISSION
REQUIRED
FROM OFFICIALS
ON THE DAY OF
THE EVENT



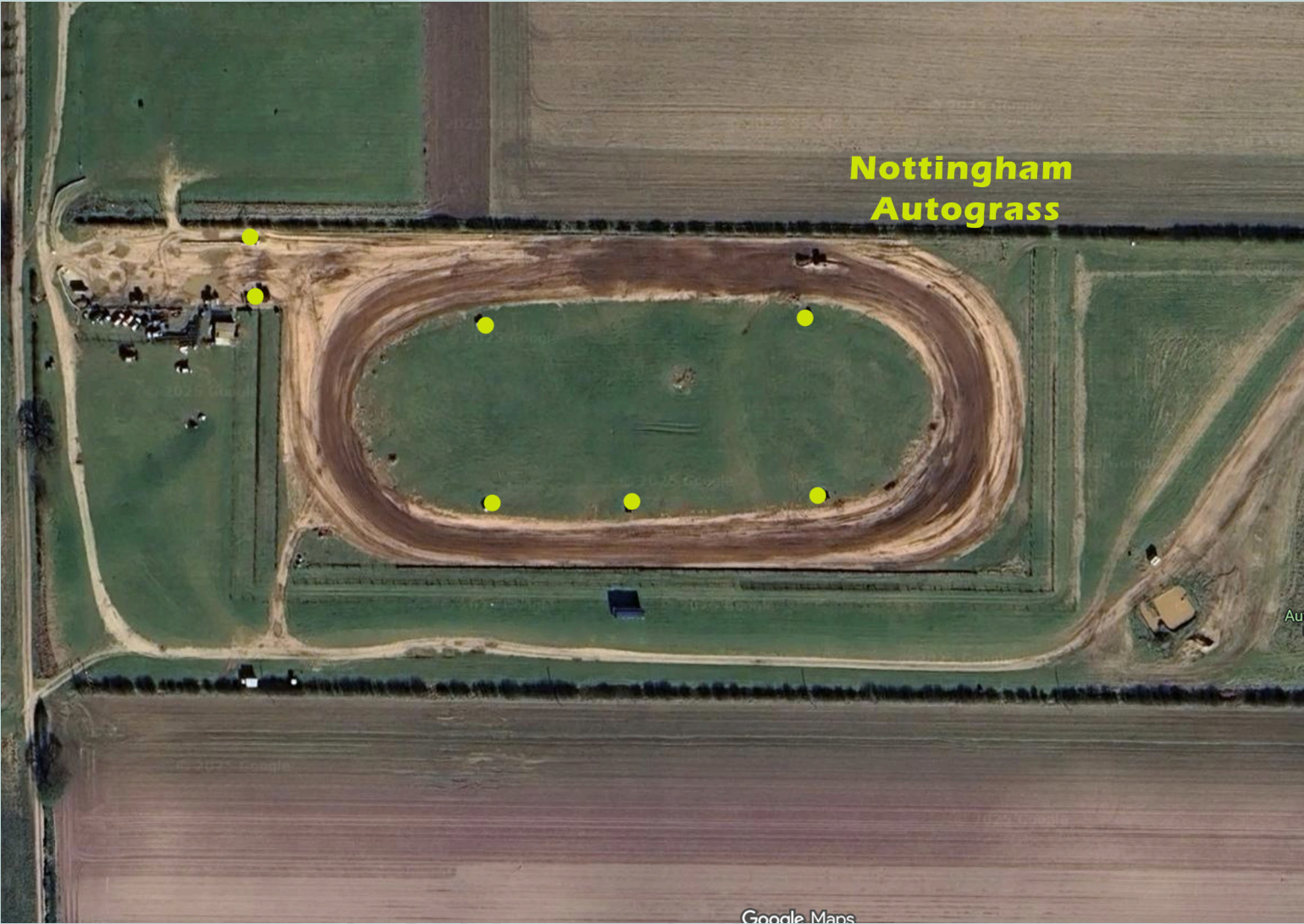
MAP KEY



APPROVED
LOCATIONS



PERMISSION
REQUIRED
FROM OFFICIALS
ON THE DAY OF
THE EVENT



MAP KEY



APPROVED
LOCATIONS



PERMISSION
REQUIRED
FROM OFFICIALS
ON THE DAY OF
THE EVENT



MAP KEY



APPROVED
LOCATIONS



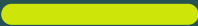
PERMISSION
REQUIRED
FROM OFFICIALS
ON THE DAY OF
THE EVENT



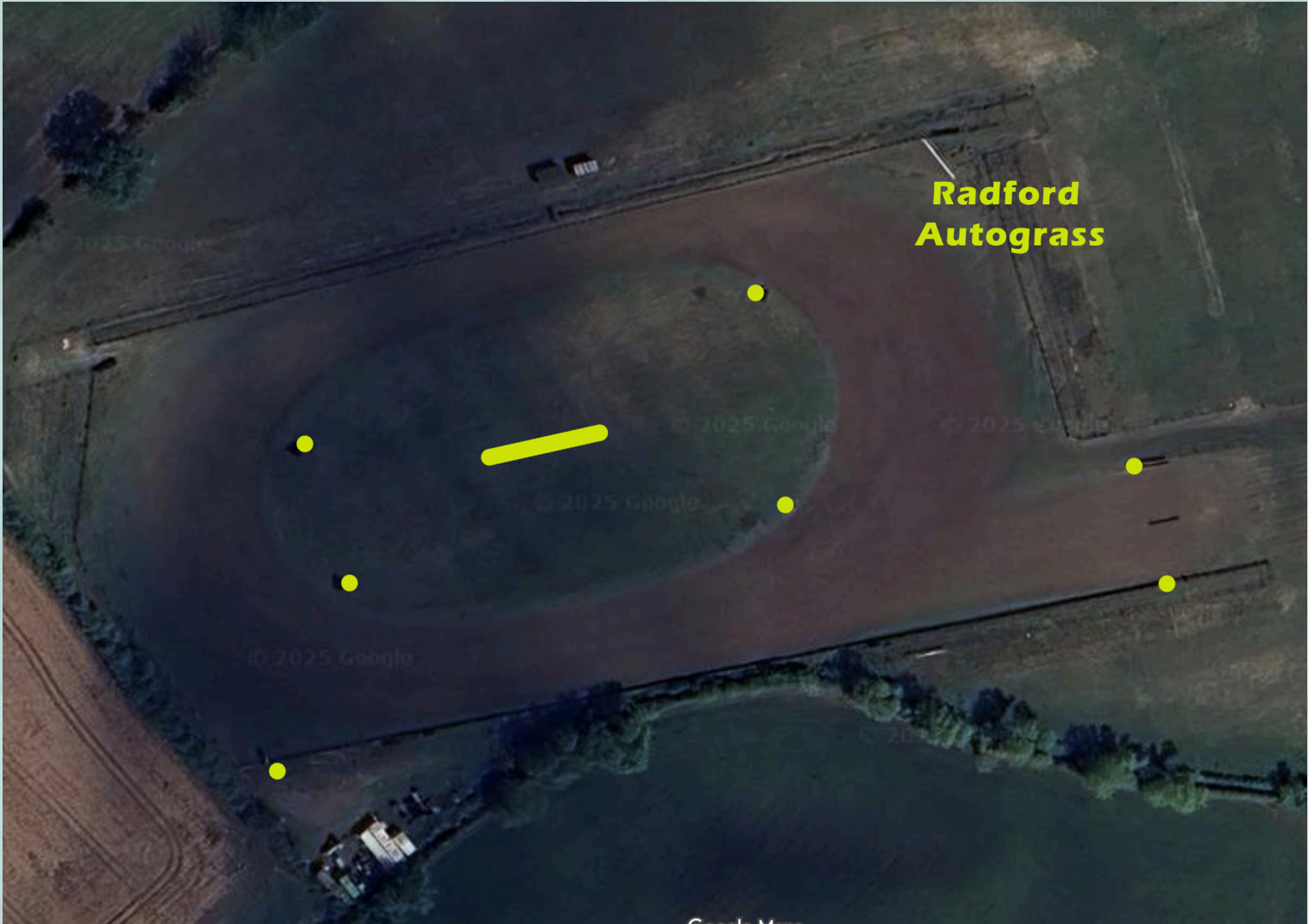
MAP KEY



APPROVED
LOCATIONS



PERMISSION
REQUIRED
FROM OFFICIALS
ON THE DAY OF
THE EVENT



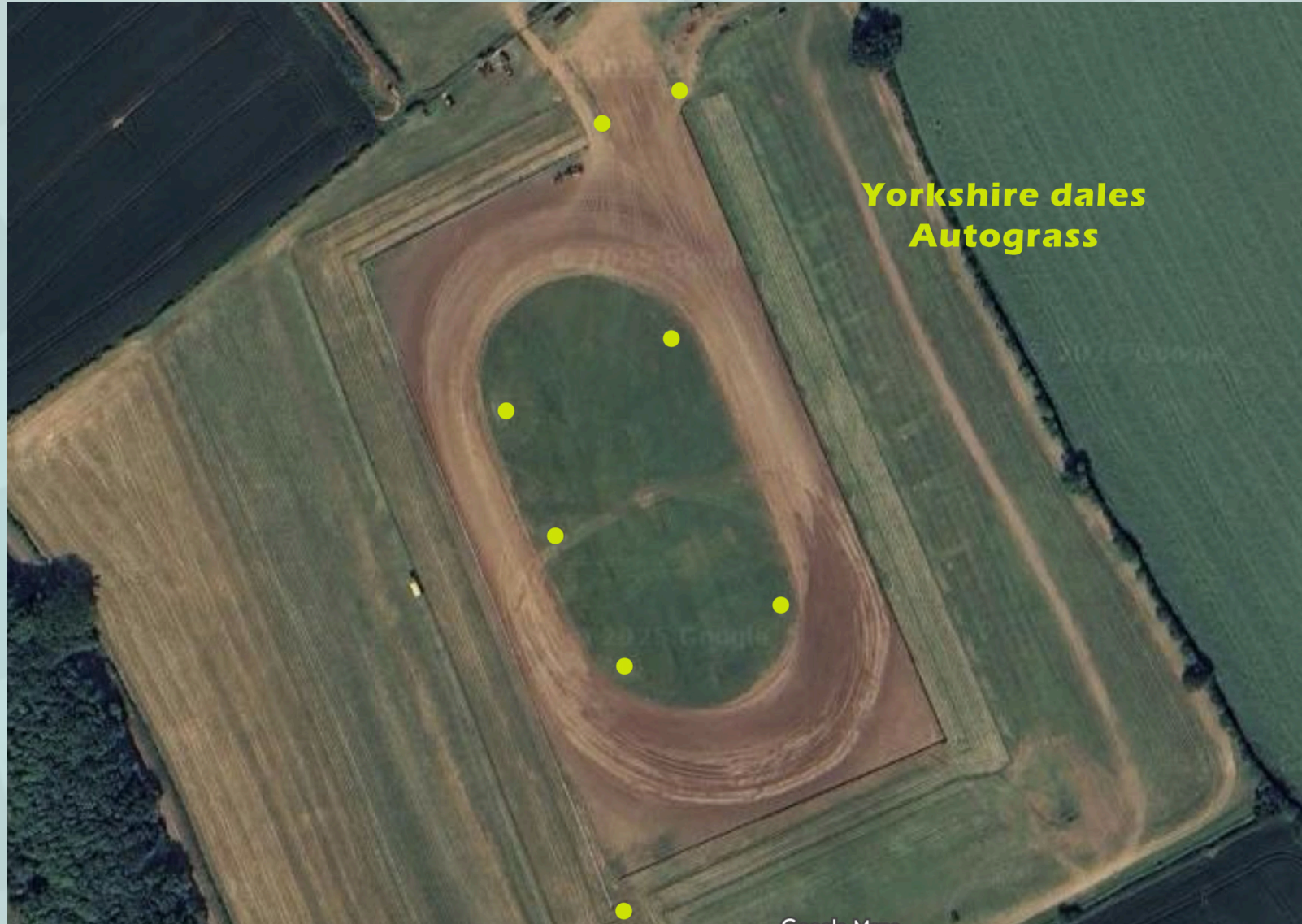
MAP KEY



APPROVED
LOCATIONS



PERMISSION
REQUIRED
FROM OFFICIALS
ON THE DAY OF
THE EVENT



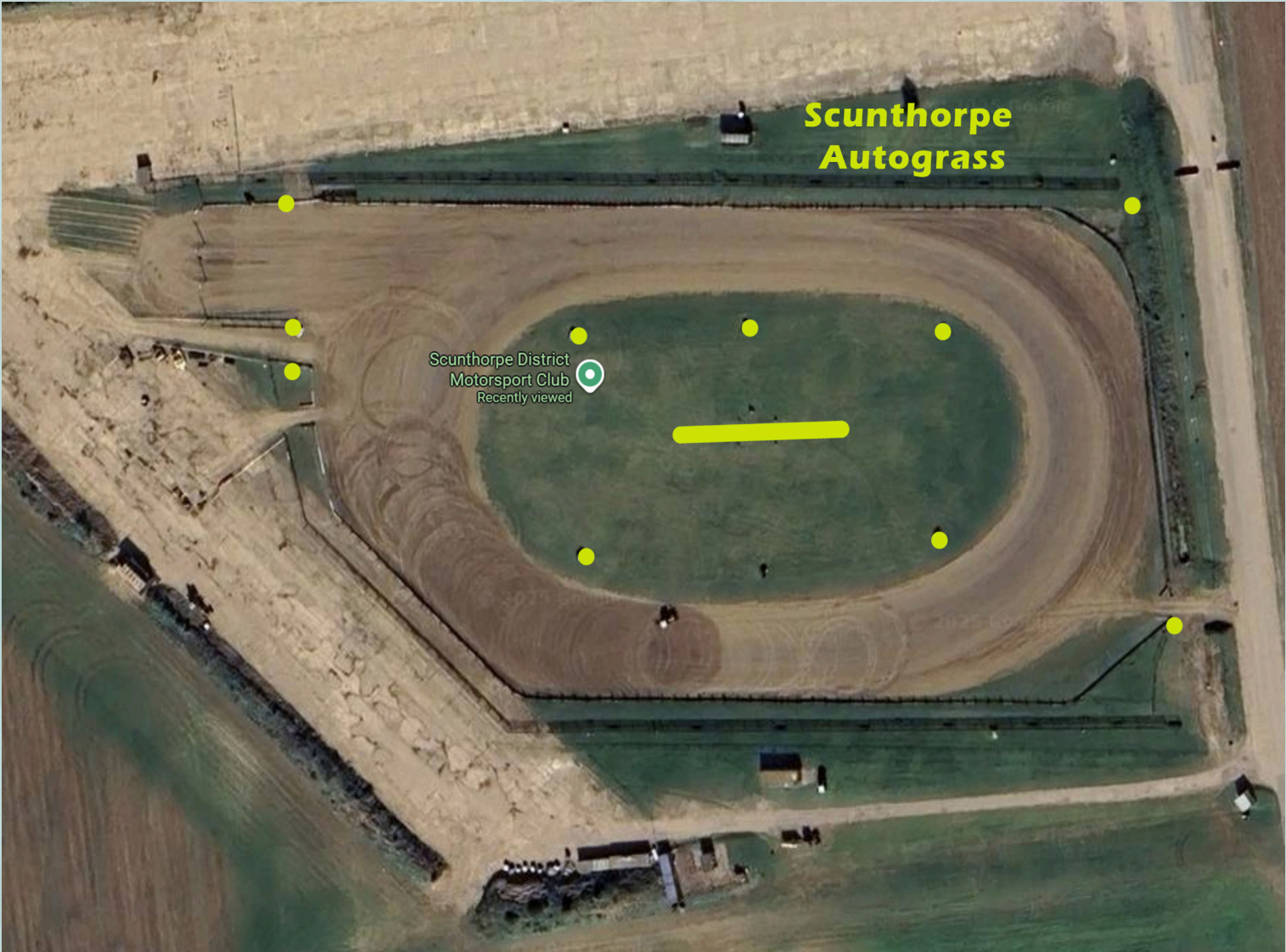
MAP KEY



APPROVED
LOCATIONS



PERMISSION
REQUIRED
FROM OFFICIALS
ON THE DAY OF
THE EVENT



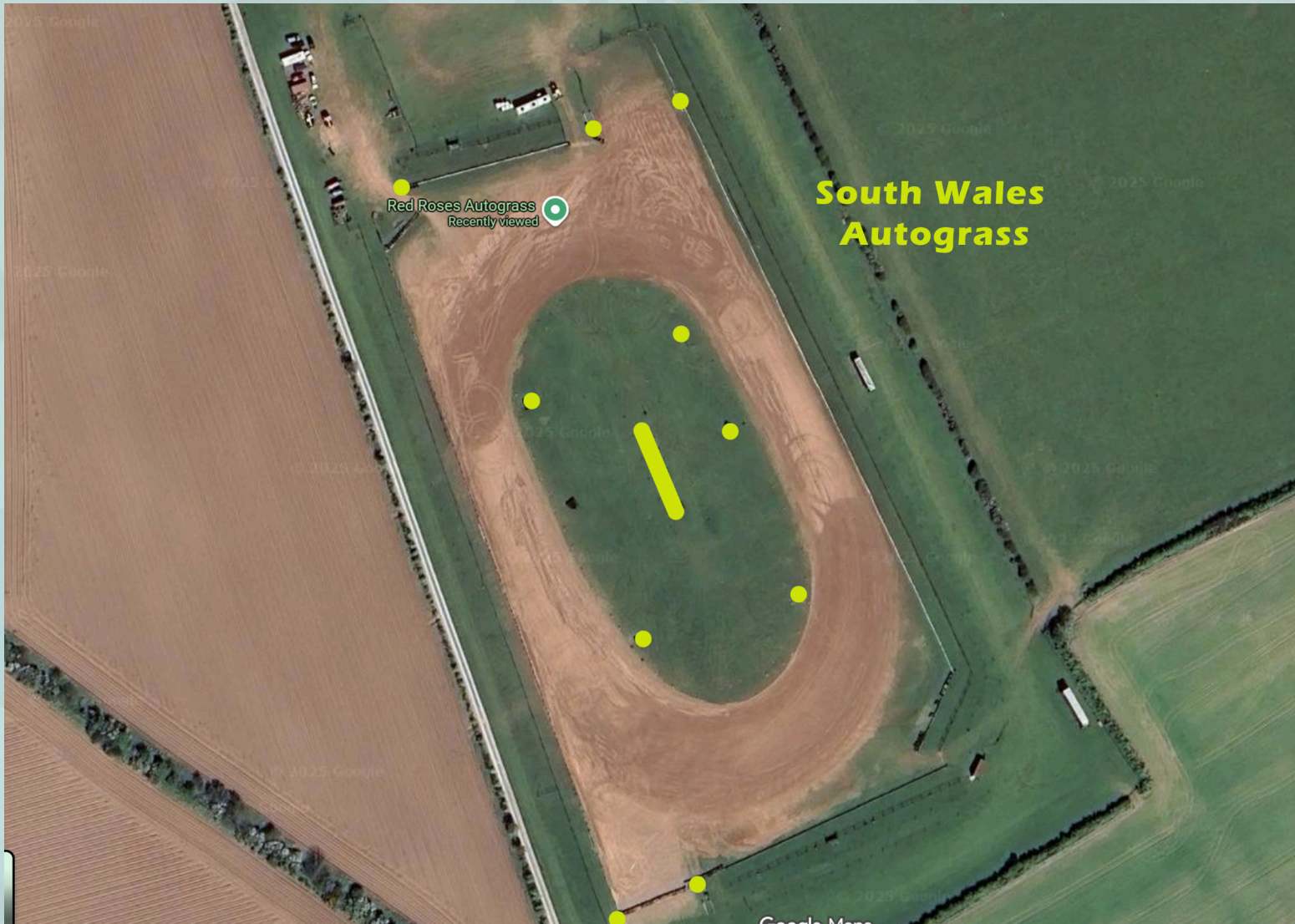
MAP KEY



APPROVED
LOCATIONS



PERMISSION
REQUIRED
FROM OFFICIALS
ON THE DAY OF
THE EVENT



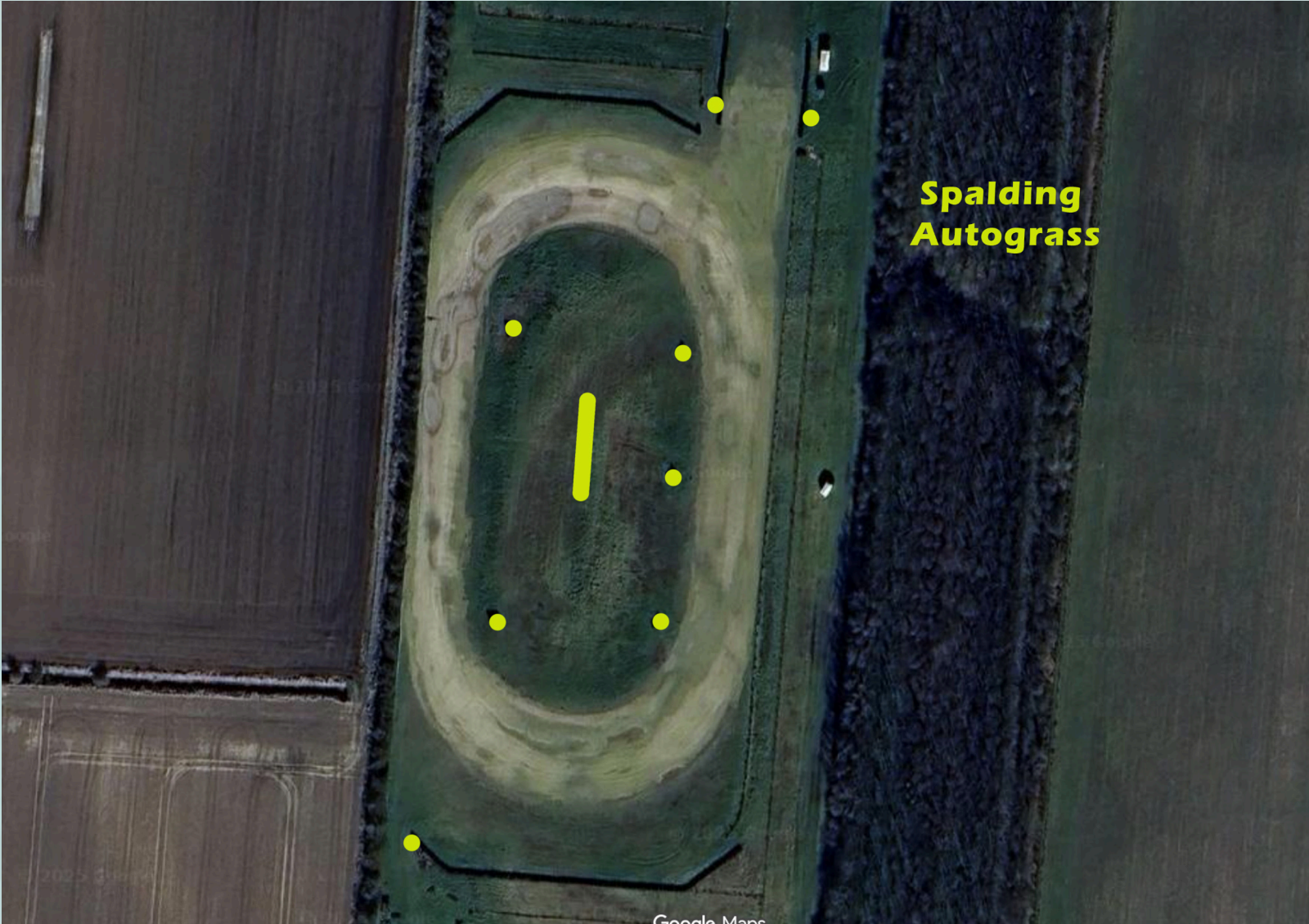
MAP KEY



APPROVED
LOCATIONS



PERMISSION
REQUIRED
FROM OFFICIALS
ON THE DAY OF
THE EVENT



MAP KEY



APPROVED
LOCATIONS



PERMISSION
REQUIRED
FROM OFFICIALS
ON THE DAY OF
THE EVENT



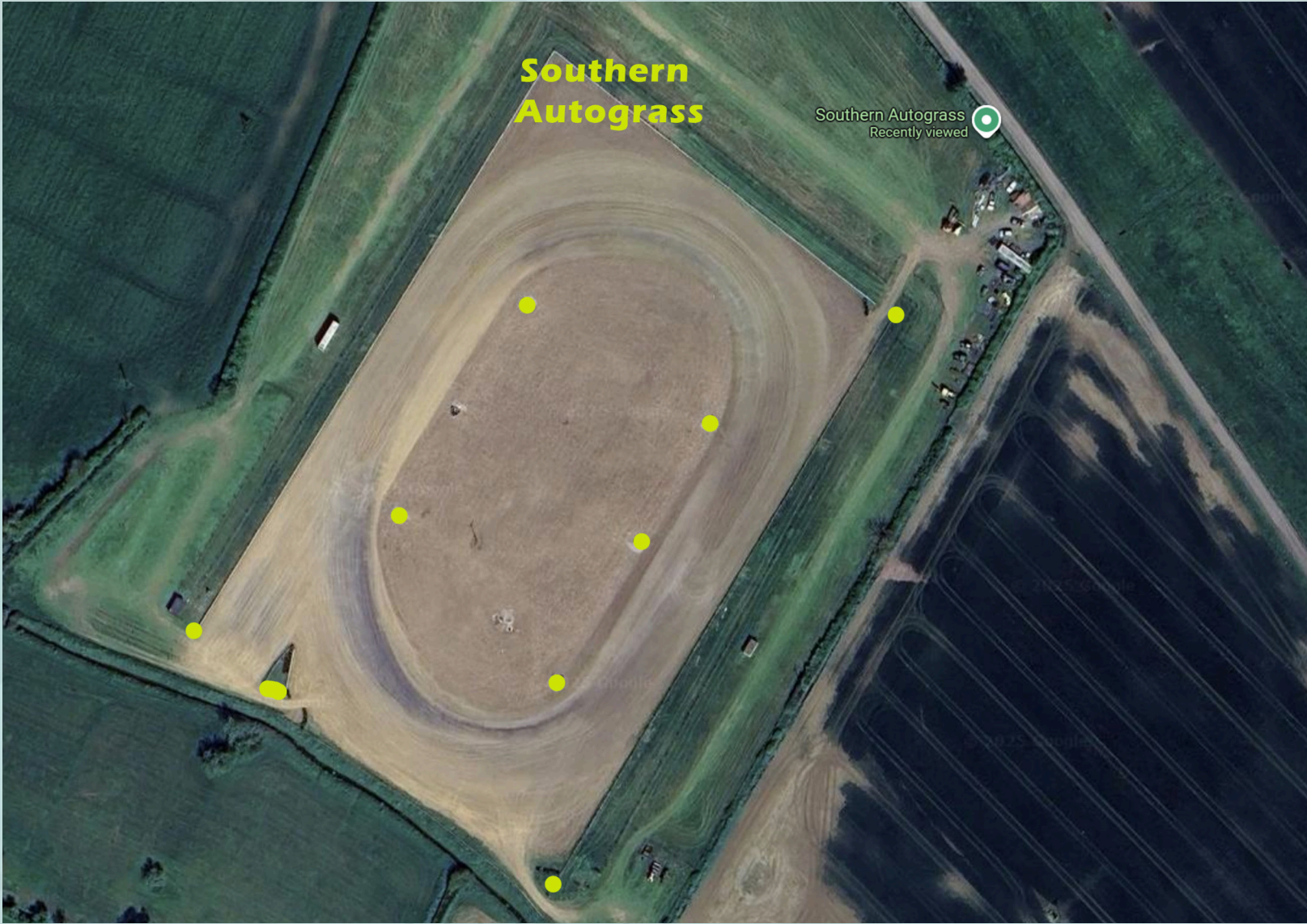
MAP KEY



APPROVED
LOCATIONS



PERMISSION
REQUIRED
FROM OFFICIALS
ON THE DAY OF
THE EVENT



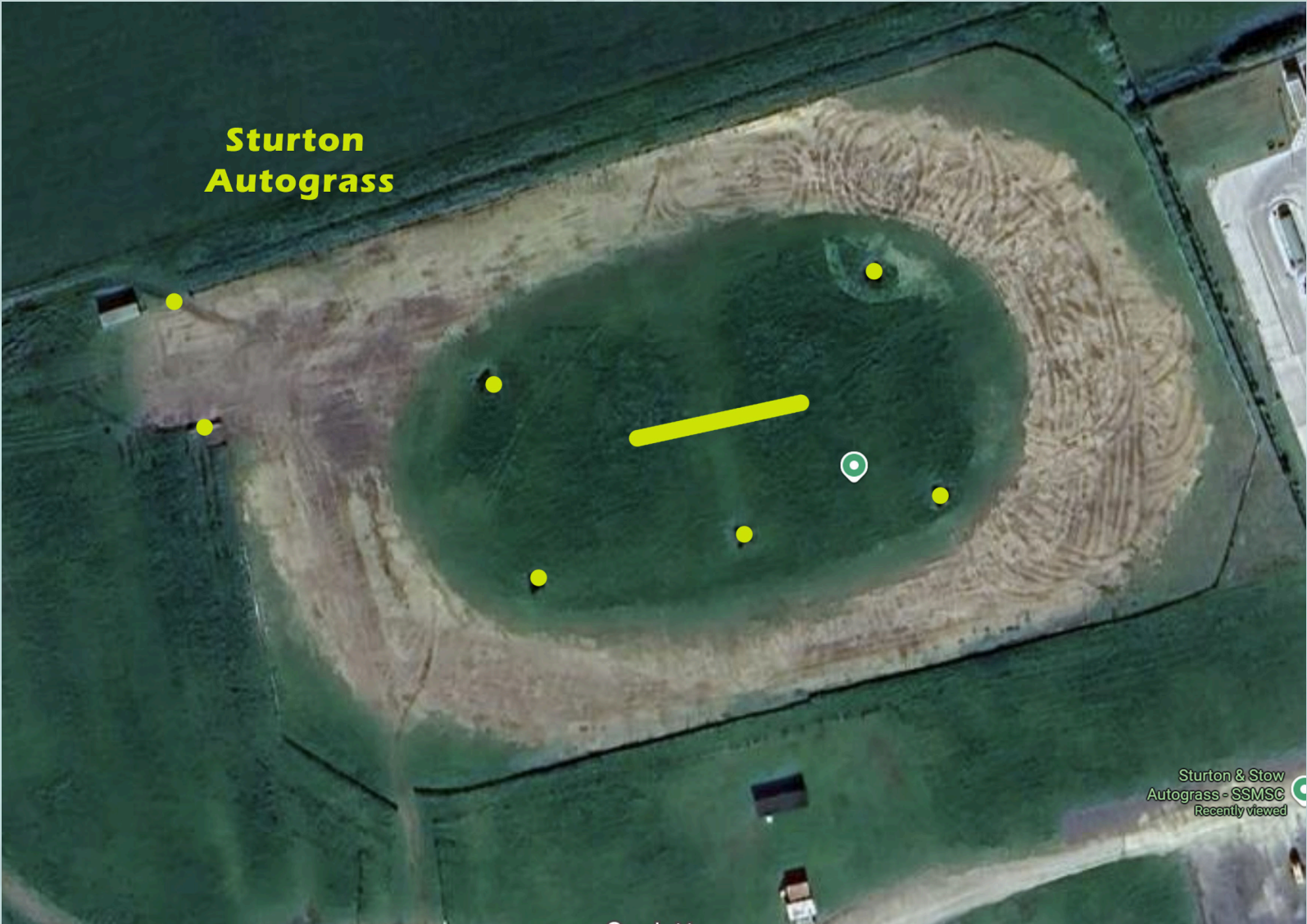
MAP KEY



APPROVED
LOCATIONS



PERMISSION
REQUIRED
FROM OFFICIALS
ON THE DAY OF
THE EVENT



MAP KEY



APPROVED
LOCATIONS



PERMISSION
REQUIRED
FROM OFFICIALS
ON THE DAY OF
THE EVENT



MAP KEY



APPROVED
LOCATIONS



PERMISSION
REQUIRED
FROM OFFICIALS
ON THE DAY OF
THE EVENT



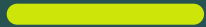
West Waterford
Autograss



MAP KEY



APPROVED
LOCATIONS



PERMISSION
REQUIRED
FROM OFFICIALS
ON THE DAY OF
THE EVENT

